

MOLAS LIBRARY



DUA

letter
News

ISSUE No. 2

November 1988



DUA ARCHIVE COPY

INTRODUCTION

This issue of the Newsletter has many more contributions than the first, and will continue to grow as more people think of suitable topics for inclusion.

The aim of the Newsletter is for the regular dissemination of information throughout the Department and can include anything which might be of interest related to the work of the Department. Copy deadlines will be two working days before the end of the month for circulation at the start of the new month.

We would appreciate some feedback about the design and content ; please make suggestions because we want to know how you feel about the Newsletter.

Famous London Churches, No. 94; *St. Mary-in-the-Way*



DUA SHORT TERM CONTRACTS

Following a meeting on 27 October with the DGLA, short term contracts will be extended to 31 December 1988. The Personnel Section will issue official documentation of this extension. Contracts will be discussed again on 30 November 1988.

JOB VACANCIES

DUA

Senior Archaeologist -

3 month contract for 158-164 Bishopsgate
Closing date - 1pm Friday 5 November 1988
Interviews - Monday 7 November 1988

Archaeological Draughtspersons -

required for fixed-term contract posts for site publication drawings beginning in December 1988 and ending in March 1989, with possibilities of renewal.

For further details contact the Personnel Officer.
Closing date November 14 1988

DGLA

Senior Archaeologist required for 155-156 High Street, Uxbridge. Work is due to start on 14 November and last for up to 2 months. Closing date for applicants Wednesday 2nd November 1988.

Archaeologists for the same project are also required, and applications should be in by Thursday 3rd November 1988

For further information and completed applications, contact The Area Officer, DGLA, Museum of London, Town Mission Hall, Mission Square, Pottery Road, Brentford, Middlesex., TW8 0SD

STAFF APPOINTMENTS

Taryn Nixon has been appointed Assistant Excavations Officer (open ended subject to funding) effective from October 17 1988.

Hal Bishop has been appointed Assistant Excavations Officer effective from October 24 1988.

Liz Shepherd has been appointed Assistant Post-excavation supervisor.

Bruce Watson has been appointed Senior Archaeologist for 69 Carter Lane/10 Friar Street.

Mark Hinman has been appointed Senior Archaeologist for 46 St Mary Axe.

STAFF NEWS

Following his accident at Thames Exchange, Gary Richards has had 3 operations, including a skin graft, on the small finger of his left hand, as an in-patient at St Bartholomew's hospital. He is now recuperating at home.

Deidre Power is working on the Salango project, Ecuador, while on unpaid leave. She will shortly be joined by Nina Jaffa, who has resigned.

Kevin Wooldridge returns to the DUA after a month with DGLA.

Sara Jones will return to the Field Section on 7 November. She has been working on archaeological sites abroad throughout the summer.

James Drummond-Murray is pleased to announce his engagement to Nankang Tonwong.

At 3.13pm on Tuesday 25 October 1988, a baby boy, Lawrence Frederick, was born to Ken and Bernie Steedman. He weighed-in at 8lb 4oz and mother and baby are doing well - father doesn't know what to make of it all yet!!

SPORTS REPORT

- from our football correspondent

A football match was held between the DUA and the DGLA on Sunday 23rd October in Southwark Park. After a hard fought game, the final score was 2-2, with Alan Mckeown scoring one of the DUA goals and a guest player the other.

Anyone interested in an inter-site football match?

NOVEMBER DIARY

Wednesday 2 November

Boardroom Presentation for New Broad Street.

DUA staff are invited to the boardroom for 2.30pm to view the finds from the excavation and hear a short talk by Aedan Woodger.

Thursday 3 November - 13.10 ED

Workshop - Glass Manufacture in Roman London - John Shepherd

Tuesday 8 November

Boardroom Presentation for Leith House, Gresham Street.

DUA staff are invited to the boardroom for 2.30pm to view the finds from the excavation and hear a short talk by Douglas Hart.

Thursday 10 November - 13.10 ED

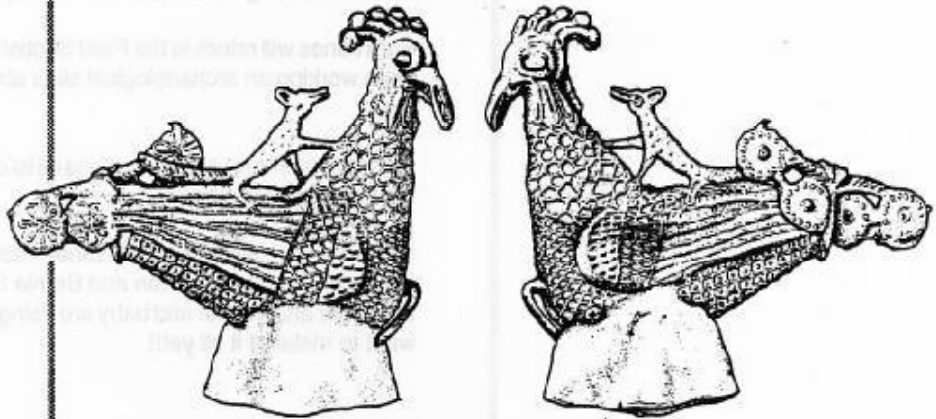
Workshop - Excavated glass of the 16th and 17th centuries - Francis Grew

FINDS SECTION

- Victoria Cassely
with illustrations
- Nigel Harris

Finds

Thames Exchange has continued to produce an interesting array of finds, including a pewter staff head depicting a peacock with a fox on its back (illustrated), a soap stone metal working mould, decorated leather scabbards and a pilgrim badge of our Lady of La Puy - the first complete example of its type from London (illustrated).



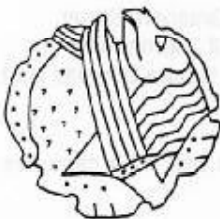
PEWTER STAFF HEAD

TEX 88



LEAD PILGRIM BADGE

TEX 88



COPPER STUD LBT 87

A copper-alloy stud found by metal detecting at Little Britain, when x-rayed revealed an early medieval design of a back turned griffin (illustrated).

A hoard of well preserved coins of George III was unearthed from the north site at Cannon Street Station. The south site has produced an ornately decorated buckle and an elaborate twelfth century bone pin, the first of its type from London.

Lectures and displays

On 6th and 12th October finds from St. Mary Axe were put on display for developers at Cayzer House and on 19th October selected finds from current sites were exhibited in the Board Room to Alan Turner Associates (architects) to accompany a talk by John Maloney on excavations in the city.

Two one-day conferences have been attended this month by members of the Finds Section. Firstly, one in Salisbury organised by the Finds Research Group on the subject of marks on objects eg. makers' and owners' marks. The second, Outside the City Walls - Finds from Roman London, was held in the Museum of London by the Roman Small Finds Group.

General

The Finds Section has one new member of staff this month, Bridget Brehm, formerly of the DGLA, who began work as a Finds Appraisal Supervisor on 17th October.

Some of the more interesting and unusual finds from Whittington Avenue are now on view in a cabinet in the foyer of the site office. Finds displayed include Roman glass and bone pins, painted wall plaster, Roman bricks of a unique size and stamped and decorated samian.

The Department has a full time staff of nine and is supported by funds from English Heritage (London Division) and private developers. The responsibility of the Department is the Environmental Archaeology of the whole of London by the support of current excavations by the Department of Greater London and Urban Archaeology, the Passmore Edwards Museum and the Kent Archaeology Rescue Unit, and the post excavation study of material from these and past excavations.

The core of the staff (funded by HBMCE) comprise six posts concerned largely with the post excavation publication programmes of the two Museums archaeology departments and the two external units. This work includes the DUA HBMC publication programme of sites funded by English Heritage (DoE) prior to 1984 and backlog and more recent excavations by the Outer London Units which have received support from HBMCE and are currently in a post-ex publication programme. Although this post-excavation work is the major component of the core staffs time efforts are made to give support to current excavations in Outer London when requested. A seventh member of the post-excavation team (funded by developers) is working specifically on the human skeletons on the Royal Mint but can be called upon in respect of problems or queries concerning burials on current sites.

Two members of staff are concerned solely with the current DUA excavations and are funded out of the developers budgets. They

**THE
ENVIRONMENTAL
ARCHAEOLOGY
DEPARTMENT,
MUSEUM OF
LONDON**

are concerned with the discussion of sampling strategy with site supervisors and the implementation of this, the physical processing or supervision of this processing of the soil samples from the sites, the initial sorting of material from the samples, and the maintenance of all the relevant records. They produce at the end of the processing stage of each site, an appraisal, in consultation with the other staff of the department and the Senior Archaeologists, of the environmental evidence from the site. This is intended to highlight the merits of a collection of material from a site and is not a post-excavation report. The funding of post-excavation work will be based on these appraisals in association with the Level III site report and the DUA's publication priorities.

The Environmental Department has finally produced a Handbook to assist archaeologists in the selection and type of sampling that may be useful on their sites. We intend to arrange a seminar for all senior archaeologists where, as well as introducing the objectives of this Handbook we will outline the areas of study the Department is particularly interested in following. We would welcome comments at any time on this Handbook and hope people will be forthcoming with comments or other areas of research we might follow at the seminar. We hope also to be organising a series of lunchtime lectures on the results of our recent work.

Our accommodation is located adjacent to the new DUA Excavation Office, but Josie Murray and Pilar Allende, the DUA Environmentalist and Assistant can be found on Level 1 of the Museum with the Finds Processing Dept.

The Department comprises:

Museum Extn		
Pilar Allende	275	Environmental Assistant DUA
John Buglass	314	General Env. Assistant HBMC
Anne Davis	315	Archaeobotanist HBMC
Fiona Kelly	315	Human Osteologist DGLA
Dominique de Moulins	315	Archaeobotanist HBMC
Josephine Murray	275	Site Environmentalist DUA
James Rackham	314	Archaeozoologist HBMC
Ian Tyers	315	Dendrochronologist HBMC
Barbara West	938.9252	Archaeozoologist HBMC

General queries in a subject area should be directed to the person with the relevant specialist expertise. Enquiries from current DUA sites should be made to Josie Murray or Pilar Allende on Extn 275 at the Museum.

CONSERVATION DEPARTMENT

Staff

Kate Starling	: heads the archaeological conservation section
Helen Jones	: museum wide post (collections, DUA & DGLA)
Helen Ganarias	: as above (returning from maternity leave in Dec.)
Rose Johnson	: DUA publication programme (recently returned from maternity leave)
Dana Goodburn-Brown	: DUA current sites
Heather Berns	: as above (previously worked on DUA publication programme)
Robert Payton	: DGLA current sites

Kate, Dana, Heather, Helen and Helen will be visiting sites fortnightly (usually Thursdays) on a rota basis. If we don't make it to your site, and you have any particular queries please ring Dana on ext. 220, or contact your finds assistant who will contact us.

On-site work

We are available for the lifting of very fragile or unwieldy objects, as well as giving advice as to appropriate handling and storage of finds. Listed below are our recent on-site projects:-

Dominant House -

1. Wall plaster lifted from wall.
2. Timber drain lifted and now stored in tank for HBMC.
3. Dismantled 5 hypocaust tile stacks for storage and possible reconstruction of Bath-house complex.

Whittington Avenue -

1. Four sample areas of two tessellated floors were lifted for study and possible display in Roman gallery.
2. Large block lift of floor, quarter moulding, wall plaster, brickearth wall assemblage (same technique used as with previous lifting of Herringbone pavement which was filmed at all stages by the Chronicle team - the Building naturals section joined us very successfully with these efforts).
3. Two iron pipe collars lifted.

Laboratory work

When not on site, we are mainly working on priority coins and objects for finds shows, developer displays, and/or publications, as well as stabilizing wet organic finds which need immediate treatment. Recently we also completed work on several notable Roman copper alloy objects from LCT 84 (Leadenhall Court) and an enamelled mount from ABC 87 (Gutter Lane), as well as some textile fragments and bone/ivory combs, knife handles etc from various sites.

TRAINING AND EDUCATION MATTERS

- Sue Greenwood

Other laboratory work is dictated by the HBMC programme. Recently completed is the work on medieval dress fittings, coins and tokens. The next publication project on Pilgrim badges, involves formulating a policy on the ethics of reshaping crumpled badges.

Research/Lecturing

Dana is continuing her research on the archaeometallurgy of metals from wet sites, as a part time post.grad. student in the crystallography department at Birkbeck College. She recently spoke about the progress of her work during a Conservation Science group conference at the Tower Museum.

In June 1988 Robert Payton ran a summer school course at the Institute of Archaeology 'On-site Conservation Techniques', including a two-day symposium at which both Helen Jones and Dana gave talks on recent sitework. Together with Robert, they are presently writing up these talks for a publication of the symposium. Students from the course also visited the laboratory and DUA sites.

Induction training is now underway. Sites should receive information for each Monday session by the previous Wednesday. Information posters will also be put up in the Excavations Office, the Drawing Office, Library and staff Common Room at the Museum, and in Bridge House and Ferroners House. In future they will be on eye-catching salmon pink paper.

The only change to the original timetable is that the environmental session will now be divided into two groups.

These groups will be clearly identified on the poster.

Training for November

Monday 7 November - 9.30am	Conservation
Monday 14 November - 2.00pm	Environmental
Monday 21 November - 2.00pm	Surveying and drawing in the field
Monday 28 November - 2.00pm	Ceramics

City University courses

City University has several evening courses which begin in January and April 1989. Areas covered include Archaeology, Architecture, Computing, History and Literature.

I have a copy of their prospectus in the Excavations Office. They may also be obtained from -

Extra Mural Studies,
Centre for Continuing Education,
The City University,
Northampton Square,
London EC1V OHB

Tel: 253 4399 x3268/3252

Libraries in the city

The city has three reference libraries. Any member of the Museum's staff may borrow books, records, cassettes and CD's by simply collecting an application card from one of the libraries and taking it to personnel to be stamped.



The main library is in the Barbican on Level 7. As well as a general lending library and reference collection, it has separate art and music libraries. Addresses and opening times of individual libraries are listed below.

Lending Libraries

1. Barbican Library, Barbican Centre, London EC2Y 8DS. Tel. 01-638-0569. Mon, Wed, Thurs, Fri 9.30am-5.30pm, Tues 9.30am-7.30pm, Sat 9.30am-12.30pm.
2. Bishopsgate Library, 230 Bishopsgate, London EC2M 4QD. Tel. 01-247-8895. Mon - Fri 9.30am-5.30pm.
3. Shoe Lane Library, Hill House, 1 Little New Street, London EC4A 3JR Tel. 01-583-7178 Mon, Wed, Thurs, Fri 9.30am-5.30pm, Tues 9.30am-6.30pm.

SURVEYING

- Mark Green

Reference Libraries

4. Guildhall Library, Aldermanbury, London EC2P 2EJ. Tel. 01-606-3030. Mon-Sat 9.30am-5.00pm.

5. City Business Library, 106 Fenchurch Street, London EC2. Mon-Fri 9.30am-5.30pm

6. St Bride Printing Library, Bride Lane, London EC4Y 8DS. Tel. 01-353-4660. Mon-Fri 9.30am-5.30pm.

Art Gallery

Barbican Art Gallery, Barbican Centre, London EC2Y 8DS. Tel. 01-638-4141 x306/346 Tues-Sat 10am-7pm (Doors close - 6.45pm)

I was appointed as Surveying Co-ordinator for Field Section II on 21st September, having carried out site surveying unofficially for several months before this. My brief is to ensure the spatial integrity of DUA site information (where are we?) though clearly, much of this work is actually undertaken by Site Supervisors (checking 1/20 plans, setting out site grids, plotting 1/100 site plans).

My primary functions are:-

1. To advise on, and if necessary, assist in, setting out site grids
2. To make sure that we have adequate and accurate information from developers
3. To ensure that Site Supervisors are able to plot their 1/100 site limits plan as soon after the site opens as possible, and to assist them with this if necessary
4. To connect the site to Ordnance Survey control

A secondary role is to keep track of survey equipment (levels, theodolites) - both hired and DUA owned, and make recommendations for equipment purchase; to introduce standard methods and procedures where appropriate; and to establish contacts with surveyors in other archaeological units, universities, the OS, and commercial survey companies.

Priorities at the moment:-

1. To make sure that 1/100 site plans for current and recently (the last six months) completed sites are satisfactorily finished (so would any supervisors who are unsure whether their plan is in this category, please get in touch)
2. To buy survey equipment for the DUA - we now own 8 levels and are also about to buy a Total Station theodolite (a combined digital

theodolite/EDM), complete with data logger and software to talk to AUTOCAD.

While on this subject, you may be aware that we have had 6 levels stolen from sites in the last 6 months (4 since September). Merely locking such easily saleable items in a portakabin is apparently no longer sufficient.

3. As part of the training programme, Dave Bentley and I will be talking about 'drawing and surveying in the field', at 2.00pm on Monday 21st November. I am also planning to run more in-depth courses, similar to the City University week-end course in March, for people who wish (and would be in a position) to use theodolites and EDM on site.

Further training is given to people during their month as Survey Assistant. This will vary depending on the workload, but should include setting up and using theodolites and EDM, plotting 1/100 site plans, and survey computations. If you fancy a month in this prestigious position, give your name to Marie Nally in the Excavations Office - now booking for Feb '89!

For help with any of the above aspects of site survey, I can be found in the Excavations Office, nerve centre of the DUA, ext 307.

IPCS REPORT FOR OCTOBER

**- Bill McCann
(Edited by B Holey)**

A number of important issues, both local and national, have caused Branch Committee to hold two full meetings this month instead of the usual one. Amongst those issues were GCHQ, the Health and Safety of our members on site and the problems of discrimination faced by women working in the Museum of London.

Because of the nature of some of these issues, Branch Committee felt that they should properly be discussed at a general meeting of the branch. That meeting was called for Tuesday, October 25th and was attended by 120 members.

The meeting held a long discussion on the Health and Safety issue. It was plain from this that there are growing fears amongst members working in the field that the conditions under which they are being asked to work are becoming increasingly dangerous. As a result a motion was passed by 119 votes to 1 abstention mandating Branch Committee to actively seek improvements in both the time available for excavations and the poor working conditions on excavations.

The Equal Opportunities Officer informed the meeting that as a result of the recent questionnaire distributed amongst the women members of the Branch an Assistant Equal Opportunities Officer had been appointed by Branch Committee. Her tasks would be to chair the sub-committee which had been set up to advise on what action needed to be taken as a result of the questionnaire and to deal generally with Equal Opportunity issues as they effect women. The appointment would also allow the Equal Opportunities Officer to concentrate on other issues, in particular negotiating a decent

Equal Opportunities policy for the Museum.

IPCS nationally is affiliated to the Nicaragua Solidarity Campaign. In addition to a local affiliation this branch is attempting to establish fraternal links with a Managua Museum. The meeting was reminded that the recent Hurricane Joan had devastated large parts of Nicaragua and was asked to contribute to this Branch's donation to the Hurricane Relief Fund. The meeting raised 85 for the donation. Anybody who wishes to contribute to our collection should contact Craig Spence or their IPCS rep.

The DUA Representatives on Branch Committee, together with any officerships they hold, and their constituencies are as follows:-

Members in Field Section II with more than 2 years experience

Nick Bateman (Branch Secretary)

Bill McCann (Equal Opportunities)

Members in Field Section II with less than 2 years experience

Gina Porter (Treasurer/Membership)

Dave Sankey (Training)

Finds:

Alex Moore (Training)

Co-opted:

Craig Spence (Health and Safety)

Portia Askew (Assistant Equal Opportunities)

They are there to protect the interest of IPCS members in the DUA and are always ready to listen to, and take action on, any problem raised by any member. Use them!

OCTOBER SITES REPORT

Sites completed In October

2 Seething Lane	Sarah Gibson
Dominant House phs 1	Mike Shea
88-93 Fenchurch St.	David Dunlop
108 Cannon Street	Nick Shepherd

Sites on-going

Guildhall Yard	Copper/Porter -?1989
1-7 Whittington Avenue	Brown/Pye -?Jan 1989
Thames Exchange	Milne/Tyler/Milne - ?1989
Cannon Street Station	Stephenson/Bluer/ Meddens/Hill/Burch ?1989
Little Britain	Greig/Lakin -?1989
Moorgate Hall	Drew Shottliff -25 November

Watching Briefs on-going

9-10 Angel Court	Dyson/Lawrence/Dunlop
9 Cloak Lane	Ayre/MacDonald/Dodwell
21-37 Mincing Lane	Killock/Bishop
10 Friar Street	Watson/A Shepherd

Test Pits covered

30-40 Eastcheap	Richard Sermon
41-55 Bishopsgate	Poole/Wiscombe/Douglas
168-170 Bishopsgate	Poole/Wiscombe/Douglas
22-25 Austin Friars	Butler/Churchill/Watson

New Files Opened

90-94 Old Broad Street
1-3 Pemberton Row
Bull Wharf
143-149 Cannon Street
51-56 Mark Lane
St Clement's Church

SITE TOURS

The following days have been arranged for Museum staff to visit excavations:-

Whittington Avenue -
Tuesday 8th November at 1pm
Tuesday 6th December at 1pm

Cannon Street Station (north) -
There will be no site tours for 2-3 weeks whilst piling and shoring are being put in.

Thames Exchange -
Because of tight security on the site, it is difficult to arrange site tours during the week. Anyone particularly keen to visit the site should do so on a Sunday.

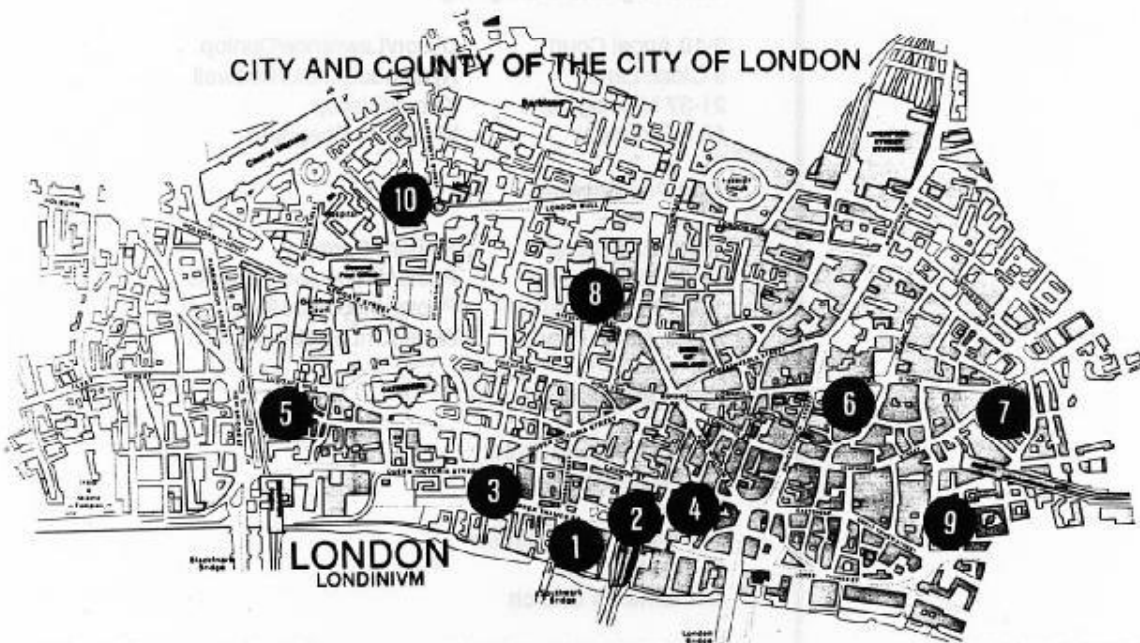
CURRENT AND FORTHCOMING PROJECTS

Dominant House

Following meetings between Brian Hoble, Gill Chitty (HBMC) and Hammersons, a 4 to 6 month period of excavation has been agreed within the loading bay area, probably to start in December.

Blackfriars-Holborn Railway

Delays on this project have, in part, been caused by the lack of agreement between Rosehaugh-Stanhope and the Corporation of London over land exchange. It is thought that matters may be resolved by 10/11/88 when it is hoped (by RSD) that the Court of Common Council will give their approval to the terms they have made with the Corporation.



Whittington Avenue

This site has run into problems with regard to the potential instability of the building. A meeting is to be held with the Corporation of London, HBMC and Museum of London to try and resolve matters. The period of excavation has been extended until the end of January.

SUMMARIES OF CURRENT EXCAVATIONS

68 Upper Thames Street

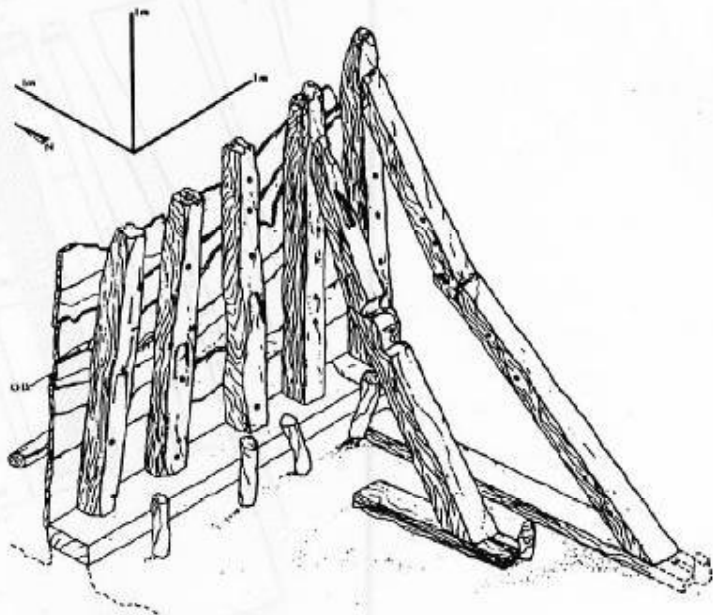
This site is now set to start in mid/late November. The cause for delay was the fact that the water table is immediately beneath the slab and the engineers have been trying to find a way of dealing with this.

Cannon Street Station

This site has been dogged by problems of health and safety as well as inadequate provision of attendance. While all of these matters have not been resolved, the break from the site during the insertion of shoring over the next few weeks should allow time for proper facilities and safeguards to be provided. Staff will not be returning to site until they have.

1. Thames Exchange

The Thames Exchange site is situated immediately to the east of Southwark Bridge and north of the Thames. The 12th and 13th century revetments and associated jetty have now been dismantled and the foreshore deposits are being sampled. Detailed drawings of the individual timbers are now being carried out.



An isometric drawing of a 13th century waterfront excavated at Seal House in 1974 which is similar to the one discovered at the Thames Exchange site.

2. Cannon Street Station

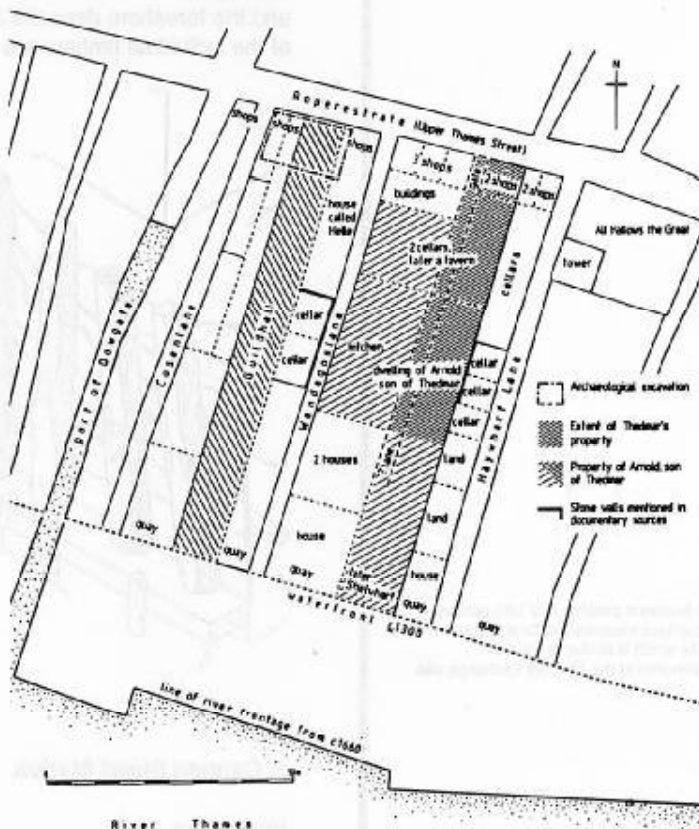
North Area

The northern area is located to the north of Upper Thames Street beneath the arches of Cannon Street Station, and lies across the area of the Roman building identified as the Roman Governor's

Palace. The excavation, to the east, has uncovered a post-medieval brick floored cellar, reusing a medieval chalk foundation, and a sequence of medieval pits. To the west a Roman masonry structure of at least three rooms, one with a hypocaust beneath a tessellated floor and the other two with tessellated floors have been recorded.

South Area

The southern area lies to the south of Upper Thames Street, beneath Cannon Street Station. The excavation lies across the northern area of the Hanseatic Guildhall, and the west wall appears to consist of two phases of construction, the earlier probably 12th century, with courses of chalk blocks and rammed gravel. The earlier wall was also buttressed externally, and bonded into a large chalk-lined cess-pit containing deposits with good environmental survival, including fruit pips and cherry stones. Also contemporary with the earlier phase were two square greensand pier-bases, supporting round columns which in turn supported round arches forming a north-south oriented arcade. The arcade might have provided access for goods brought in from an entrance on Thames Street, with the area being used for storage, and the main business probably conducted in the floor above.



The Guildhall of the German merchants and its neighbourhood, c. 1300



The Steelyard and its surroundings,
drawn by Hollar in 1647.

3. Dominant House

The site at Dominant House is located on a part of the Roman city known as the Huggin Hill Baths. Trial work in advance of demolition has identified substantial remains of the Caldarium (hot room), observed in the 1960's, and other masonry. Clay and timber buildings with large quantities of painted plaster have been excavated.

4. 108 Cannon St

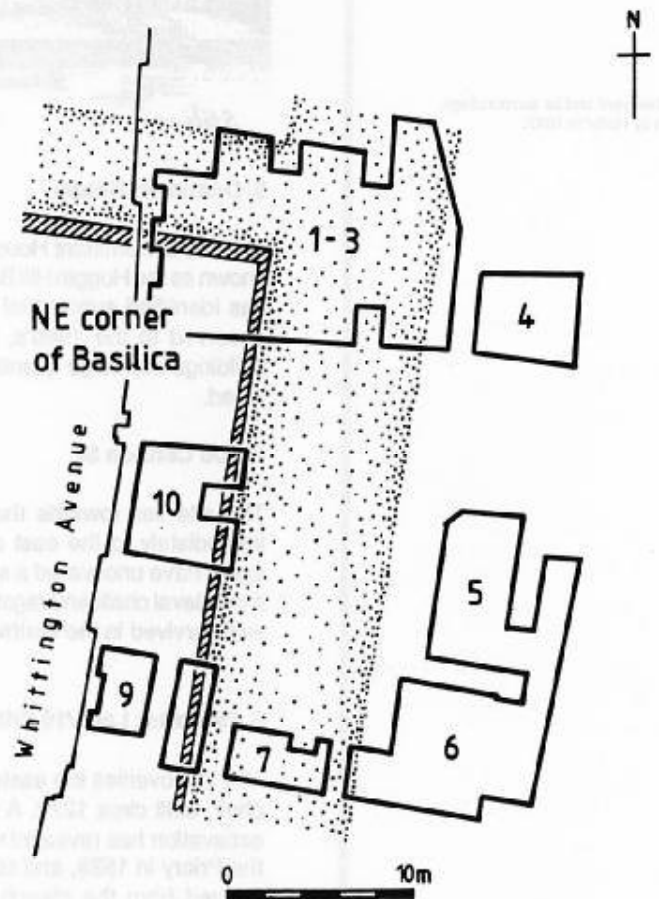
The site lies towards the eastern end of Cannon Street, and immediately to the east of the Roman Palace. The excavation areas have uncovered a sequence of Roman gravel quarries and a medieval chalk and ragstone lined cellar. A medieval chalk-lined well survived in the northwest corner of the site.

5. 69 Carter Lane/10 Friar St

The site overlies the eastern end of the Dominican Priory church choir, built circa 1279. A watching brief, in advance of the main excavation has revealed walls dating from after the dissolution of the Priory in 1538, and constructed from reused stone, probably derived from the church. A fragment of coursed chalk rubble foundation may be part of the north aisle of the church.

6. Whittington Avenue

The site occupies a position across the north-east corner of the Roman basilica; Roman roads to the north and east of it, and Roman buildings to the East of the roads. The internal basilican floors have now been excavated and a mortar mixing area associated with the construction of the basilican walls has been uncovered. The sequence of external gravel road surfaces include a series of water pipe trenches containing the iron brackets which would have joined together the wooden water pipes. To the east a further tessellated floor has been uncovered, together with associated walls, and to the south a fragment of quarter-round moulding (equivalent to a skirting board) with painted plaster has been lifted by the Conservation Department. Earlier buildings are now beginning to be uncovered.



7. 88-93 Fenchurch St

A small watching brief was carried out on the site located at the eastern end of Fenchurch Street. It located a sequence of Roman layers and medieval pits which can be related to the sequence of Roman clay and timber buildings uncovered in the excavation earlier in the year.

8. Guildhall Yard

No report received

9. Seething Lane

The site is situated in the east of the city, to the south of Fenchurch Street, but within the line of the city walls. Four excavation areas have been completed and revealed a sequence of medieval inter-cutting pits and several post-medieval and medieval sunken features, either cellars or cesspits.

10. Little Britain

The Little Britain excavation is located outside the Roman and medieval city walls and to the west of Aldersgate Street. Two excavation areas have uncovered 10-12 medieval cesspits sealed by a thick dump up to 1 metre thick. A chalk walled cellared building located in 1986 extends into the present excavation and the latest phase of rebuilding may be as an 18th century icehouse. The entrance and some of the steps down into the structure have also been excavated.



17th century houses in Long Lane, near Little Britain, drawn in 1795.

Recent Press Coverage

will be brought into the site and the remains will be left in situ. A number of excavations will be carried out in the site in the next few months and the remains will be left in situ. A number of excavations will be carried out in the site in the next few months and the remains will be left in situ.

THE INDEPENDENT Thursday 20 October 1988

Trading colony site hit by office plan

By David Keys
Archaeology Correspondent

THE REMAINS of a medieval German trading colony have been unearthed in central London, but because of lack of time at least 65 per cent of the redevelopment site is to be destroyed without proper archaeological excavation.

The site — once an autonomous enclave run by one of medieval Europe's most important powers, the Hanseatic League — is of great historical importance, archaeologists say.

The area, part of the Cannon Street station complex, is being redeveloped as an office block.

Archaeologists from the Museum of London have discovered the remains of a twelfth-century single-aisled hall, the earliest secular building of its kind found in the City — and the early fourteenth-century guildhall of London's Hanseatic merchants.

Large parts of both buildings and of the twelfth-century quay-side will not be investigated because development schedules mean that archaeologists can only have ten weeks to carry out excavations.

The Germans had established



A 1616 engraving showing the waterfront owned by the league. *Illustration: Guildhall Library.*

a foothold in London by AD1000. In 1175, King Henry II allocated an area just west of London Bridge to the citizens of Cologne. By the fourteenth century, the Cologne connection had broadened to cover a range of German cities

— grouped together as the powerful Hanseatic League. Its London territory enjoyed a quasi-sovereign status. By the late fifteenth century it controlled a 5,000 square yards of waterfront. The Hanseatic enclave lasted from

1175 to 1598 when the German traders were ordered to leave.

The excavation is being funded by the property developers, Speyhawk PLC, and is being directed by Richard Bluer, a Museum of London archaeologist.