

# GROUND

MAGAZINE.

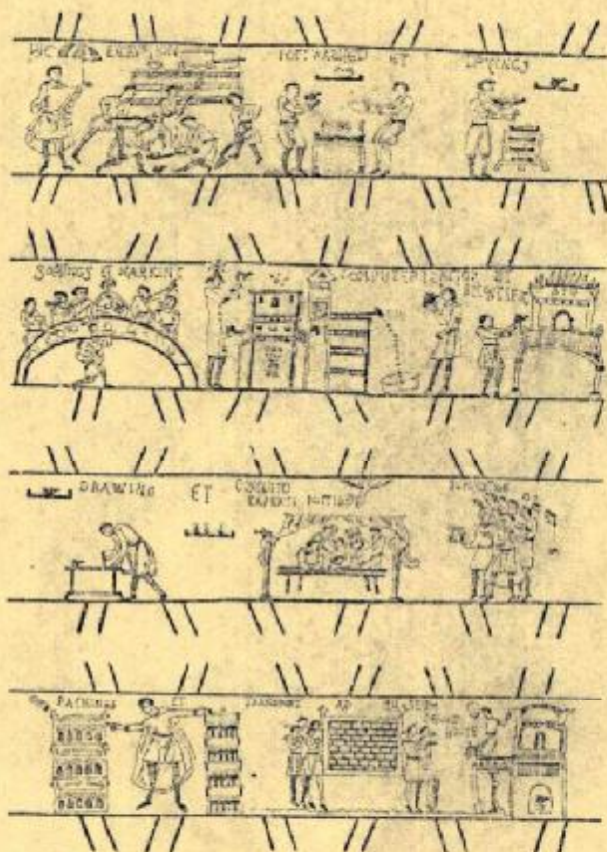
UNDER

THE

DUA  
STAFF  
NEWS

No. 3.

FEB.



The picture above is to be the front cover of 'The Medieval Pottery Research Group Handbook', due out this summer. It will be the first comprehensive publication on the subject, and will prove itself invaluable: SO MAKE SURE YOU GET ONE!

## BASEMENT TAPES.

Again we return to the "Whatever Became Of....column. We sent our ageing reporter in search of the lost Angel Court and others....

Apparently the remains of Angel Court, and a few other oldies but goodies (such as Triangle and NFW), are now in the hands of 'Derek and Clive' better known as Chris Green and Clive Orton who are the units Pottery Research Persons. Chris deals mostly with the pre- AD.400 period and Clive with AD.900 onwards. This leaves the infamous Saxon pot to the finds sections hallowed leader Mike Rhodes.

Up until January Clive was working on the Angel Court pot and the report will be upon us soon. Meanwhile Chris is tackling Triangle which he says is basically a boring site but at least will provide some good type examples of Roman pot for the enigmatic Pottery Fabric Library.

Our insipid reporter, who wouldn't know a P.F.L. if it fell on him, was shown the pride of the Finds Dept. (rumoured to have cost-with fittings-over £10,000.) the Polstore. This, it was explained, is the DUA's filing cabinet of pottery fabric types found in London.

After half an hour of being blinded by science our reporter managed to make some sense of the following.

At the moment, after two months work on it, the PFL is about 5% used, containing about 90% Roman with a little Medieval and Saxon (the latter from Africa House and St. Mildreds Church). Very soon a lot of Med' and Post-Med' will be added from the NFW, Aldgate and Minorities sites.

When the library is well established it will be possible, by comparing a few sherds with those in the 'file' to find its source and date. The 'file' will be invaluable for the compilation of distribution maps and will be available to people inside and out of the unit to use.

Clive, famed inventor of Archaeopoly, not content with two names for the 'file' has christened it the Fabricanium. When our reporter asked what that meant he was politely shown to the door.

R. ZIMMERMAN.

## TRIG LANE.

2.

At Trig Lane we are, at the moment concentrating on post-excavation work. This however, will be interspersed with the preparation of TL77 when the machine returns and the ramp transfer/debris removal operations resume.

At the moment though, we are cross-indexing all the records, have compiled a list of over forty drawings and have begun the phase plans. Correlation and summarizing of the eighteen structural phases has also commenced.

John Burke-Easton, on behalf of the General Assistants Cooperative.

## MILK STREET.

The brief for Milk Street is to investigate and prove or disprove whether a N-S, E-W Roman road junction exists. Priorities are the road/s and associated buildings. However, if the elusive Saxon levels appear they will take precedence over the buildings.

To date, (Friday. 28.1.), the site has revealed the N-S road, this is under Russia Court and shewed up in the first trench, several Medieval foundations and a chalk lined wardrobe, plus a possible streambed/floodplain, as yet not dated.

On site are: Andy Boddington, Trevor, Esta, Pete, Richardo, Graham and Alison (FA).



"I don't know, but if it's a homing pterodactyl, it's a bit bloody late . . ."

The way things are at the GPO, the sites beginning to look like a modern version of a Frankenstein classic, but with rather more mad scientists. After all, it's no easy task giving birth to a series of errant Roman walls, hidden as they are by an aftermath of horrific destruction often resembling a macaroni pudding the pet mouse high-dives into. Even less congruous, the surgery is administered by an unlikely a bunch of mad scientists as three or four geographers, a couple of biologists and a miscellaneous handful of historians, chemists, artists, and even the real thing, all acting with the one accord to practise geo-cultural surgery.

During the last month, our errant child has been in its worst mood, a real stick-in-the-mud. In fact, the odd boot has been left behind in the latter so often as to warrant wellies with Teflon soles. At other times, the odd rivetted trowel will bend through 90° when trying to make a minor incision, and if it doesn't break, will return through 180° to give the holder a resounding thwack across the knuckles, as the latter gracefully plunges headlong into the nearest mudbath. Our hapless hero extricates self from mud, teeth gritted and gritty, and solemnly mutters varied pronouncements concerning soil, frozen nature of. Hero, minus both wellies now decides to plan the layer since there is no way to gently, or otherwise, remove that layer short of a hernia, extreme violence, or a heatwave. In the unlikely event of the latter, geo-surgeon removes ice-splinters from posterior, curbs natural instincts, and departs to Record Hut, (via the sink for a scrub down).

### COMINGS, GOINGS AND HAPPENINGS.

In the last issue, I seriously omitted the following in the list of JCP's, Mike and Penny. Mike has been with us since Oct. and Penny since Christmas. Also omitted was Clement Dufour from Montreal, who has done much work there on native sites. My apologies to all.

Our newest members are Richard, he joined us this month, and Gabriel from Drogheda, just across the Irish Sea. He's an unpaid vol', and a student of archaeology/geography.

We are sad to have lost Peter Robinson from Rochester in New York state, and to be shortly losing Barbara, also from America. Good luck and our best wishes to both of them. Last but nowhere near least to be missed will be Caroline who is returning to 'Crown Court' in mid-Feb. We've been lucky to have such Grace at the GPO, and I know Trig will echo that. Good luck C.G!

**ROD.**

Work during January has concentrated on removing the destruction debris associated with the building pre-dating the structure/s described in the last 'UNDERGROUND'. This general destruction horizon seems to divide into two events, the first being the destruction proper of the building, and the second, the levelling of the area to prepare for future building, using similar material.

(∴ "this building, although more extensive than the later structure, seems very similar to this later structure." Which was composed of brickearth mudbrick which formed a cill. There were set in a shallow cut (5-15cms. deep) and in places contained tile and stone which may have supported upright timbers set in the cill. The cills may have been as much as 60cms high, and are known to have post holes, presumably to support a wattle and daub wall, sometimes plaster faced. 'Rooms' average 3-3.5m. (width and length).) Two hearths, one of which may be a domestic oven, or furnace(?), have been located at the south end of the site. A DOE inspector will shortly be looking at them to help in the interpretation of these features, which may provide a clue to the building use.

The building was bounded on the east by a gravelled alley-way, probably giving access to Newgate St. to the South. Destruction clearly continues to the East of the alleyway, and similar destruction layers at a contemporary level are reported from Christchurch to the West. This may indicate an historical context rather than a local explanation for the destruction. The most likely candidate is the Hadrianic fire.

CONTINUED ON PAGE 5.



TUT, TUT!

# MONTHLY MEETING.

4.

## JANUARY .....

### MATTERS AROUSING.

Two Portacabins have been aquired at an extraordinarily lowcost from London Transport, they are to be sited at Trig Lane. The cost of transporting these cabins (from Heathrow Airport) is estimated at around £1,000. BH has arranged with the D of E, a 50% grant towards it. £1,000 might seem a lot to pay, but it was pointed out that the value of them both was about £5,000. Kept in good order they could prove a handy asset.

The optimism with regards to the GA vacancies is unfortunately now the reverse! As usual bureaucracy has the last say. Permission has now to be granted by the Board of Governors, according to Ray Collins there is not much hope. He suggests a statement from the CUA, arguing his case. Mr. Merrifield advised, "Don't make it to emotional". At which point everyone burst into tears.

A request was made to the Museum for clothing lockers for the Finds Dept. Ray Collins thought it might be possible to obtain no more than six: a request for ten is being made!

Good news for the DUA Seminars! So far dates have been arranged with Mr. Tom Hassal, 11th. March. 5-6pm. He will talk on Oxfordshire Archaeology, 1976. Should be interesting!

Cecil Hewitt, Carpentry and Joints expert. Wed. 6th. April.

Brian Hobley, Management expert. To be arranged.

David Hill, Saxon expert. To be arranged but probably March/April.

Harvey Sheldon and Peter Addyman to be contacted.

### STAFF RATIOS.

BH said he thought that now the JCP's had gained experience he felt that it was time to try to forget the term JCP, everybody should be considered equal.

The subject of the Job Creation scheme life expectancy cropped up. It now seems that, subject to the Manpower Commission grant coming through at the end of the year, every body will be able to stay on at the DUA for one more six month term. The maximum

time they are allowed to stay on the scheme is twelve months.

Trevor H. asked if each site should have a No. 2 capable of taking over the duties of a Supervisor, i.e. writing up, incase he/she should be "run over by a bus". Answers varied. Steve thought there should only be one Supervisor and the Assistants should all be treated as one. BH said it was policy to have an ASS on each site, adding that he thought Steves idea fell down because everybody has different capabilities. Most people shared this view.

Any staff inter-site moves are to be arranged by the Supervisors concerned. BH must be notified when decisions are made.

Mike Roads requires two more illustrators.

One of the GA vacancies is to be used for a draughtsperson.

### EXCAVATION and RESEARCH PRIORITIES.

This was an interesting subject. Milk St. was brought into the foreground, and its excavation priorities questioned. The outcome of the discussion was that, after three years!., BH now sees the need for a Site priorities policy. A team has been selected of people with a particular interest in one or more of the Periods applicable to the City, thus making democratic decisions possible. The team is: Tony Dyson (Research), Peter Marsden (Roman), J. Schofield (Med'), B. Hobley (Roman) and M. Roads (Saxon).

Meetings will be held when and where possible, at a minutes notice if necessary, with an Annual Meeting at the beginning of each financial year.

Rumours circulating that 1st. of February is to be a Unit annual holiday to celebrate this miracle are unfounded'.

### STAFF REPORTS.

Tony Dyson. Charles Hills Riverside Report is now with Tony, it should be with Hugh Chapman by March. Because of its size it seems that it will be published in two parts, Part 1, The Excavation; Part 2, The Stones, etc Richardo has finished Angel Court.

Peter Marsden. The Forum report continues, but John Maloney has finished the kitchen lino.

STREET WALKING. With the watching brief going ahead at Milk Street, Andy reported that he had not had the time to look around the City, and anyway he hasn't got his bike! He mentioned however, the discovery of a tessellated pavement at Milk St. John Schofield (Med) couldn't understand the excitement.

CLIVE ORTON. Clive and Louise have been working on the NFW and St. Magnus pottery.  
PTO.

MM.anon.

Part of the finds area, he reported, has been damaged by floods. Something to do with the Walbrook apparently.

Mike Rhodes. (see chart for status)

Merry is to be Processing Supervisor (see chart for status) when she returns from holiday.

Our Micky has made himself a hierarchal structure flow chart- see page 7 note it's called a 'Working Structure! ..... is he planning a coup d'etat?

Mick reckons Clive and Chris know enough about London pottery to be allowed out. They will be visiting the sites giving advice and keeping an eye on the finds section on site. It's most unfortunate; Michael thinks he wont have much time to visit the excavations, but might be able to 'spare twenty minutes, occasionally, during my lunch break'.

The finds staff have requested an extractor fan, a fire extinguisher and a ladder to street level, in case of fire?

TREVOR HURST. 'We plodded on'.

STAFF REQUESTS.

Problems with the public and the North area at the GPO site have been solved; two machine-gun turrets are to be erected, plus a sturdy fence around the area.

Site location maps are to be erected in due course.

Excavation priorities were spoken about earlier.

ANY OTHER BUSINESS.

Mike Rhods was upset because the nasty museum wont give him any money to go on an official conference. After a general discussion about the need to be able to go to these very important lectures, Mr. Merrifield agreed with BH that he would approach Mr. Tom Hulme with the proposal, that the DUA might be allowed an annual sum for lecture expenses instead of as now, being linked with the Museum allowance.

Mike wondered if it would be possible to obtain the money from any other source. The answer was no. (he could of course try Oxfam, Concern for the Aged or even Shelter.)

There will be a photographic session at Milk Street on Friday. 4th. Feb., afterwards there is the first meeting of APT. (Archaeological Priorities Team) "Into the trench, dear friends!"

GPO,

Cont'd. from page 3.

Future work will involve the excavation of the structure below the destruction debris which presumably dates to the early C2nd. At first glance, the building is of a similar nature to its previously excavated successor, though in a better preserved state being well protected by up to 60cm. of destruction debris.

**STEVE**

**from the mat!**

The problems of the DUA Harriers, bottom of the league since March, 1976. (writes hard hitting reporter, ASA NEWT.), were brought up in an emergency session, during a session at the HQ. of the DUA. Boozers Assoc., The Globe (or Mecca as we call it). Despite making record profits on exports to SLAEC (S. Garfi), the Three Bells (Bedford) and a combined Sheffield XI, the strike-free hard-hit-and-missing policies of the Harriers has since borne little fruit. The DOE has poured little nothings into the Harriers to improve their position, the Globe has renovated its convenience (hooray!), and a dozen new JCP's have been free-transferred from the Unemployment Exchange clubs, all to little avail. We still can't win games. This may be the result of a mandatory three hours boozing before each game, or even Lauras soft talk before each game, but it's probably charity- after all there's only three Southwark players!

It is of course, a well-known fact in archaeological circles that our brave boys and girls in mud stand less of a chance of hitting the right number at the right time than say a mouse has of winning the pools, but this team is now showing, despite our low league position, a lot of promise. And the year promises just that, a low league position.

But do not despair! Even if we can't win, we're winning for archaeology in London simply because these meetings lead to the archaeologists information exchange with other units in the archaeologists second-favourite place, the pub, and this can only be beneficial. So if you have little to do on a Friday or a Wednesday, drop in on one of these meetings, relax,..... and we might even win the odd match!

**asa newt**





## MAN

One of the members of the DUA, who seems to receive sparse attention in the columns is Peter Marsden ex-member of the old Guildhall Museum (remember them?) and now the man responsible for getting their (many) unpublished sites in print.

Again our raving reporter was on the scene to bring you the following.

Peter, along with his two cell mates, Vanessa (Nessie) Mead and John (there's no goon like an old goon) Malony, are currently imersed in paper which will eventually become an up to date report on the Roman forum and basillica. The report, to be published in LAMAS., will be an integration of some 14 sites dug in the forum area since the 1880's incorporating the DUA's Forum South East (1976) and Lombard Court (1976).

Peter told our man on the spot that the biggest headache was the complete reassessment of previous plans of the sites and relating them to the O.S. large scale maps. Apparently the maps used before were not too accurate which accounts for the east and west ends of the basillica not aligning correctly and many other minor problems of the same sort. None-the-less after much pressing of pocket calculator buttons they've managed to sort it all out and Peter says that the new plans will be more than accurate enough.

He has also been able to obtain a lot of information on the pre-forum building (dated to 70-80AD.) and unburnt Boudiccan structures of wattle and daub construction suggesting that not all of Londinium was engulfed in the flames of 60 AD.

Meanwhile as the lads are covered in daub and paper the lass, Nessie, is doing the groundwork for a future publication on Baynards Castle. This will eventually include the pre-DUA. and 1975 excavation at "the city's only royal palace".

# RZ

Dick Low, who in 1708, at the age of 11, robbed a goldsmith in Cheapside of a bag of fifty guineas, was probably the youngest highwayman on record.

'Highwaymen of London' from William Kent's, 'ENCYCLOPAEDIA OF LONDON'.

Dir. John Schlesinger, starring Laurence Olivier, William Devine, Dustin Hoffman, Roy Schneider.

What does yer normal film conniseurer, bought up on brown and mild, and twenty woodbines, look for in a movie nowadays: Sex? Violence? Yes, well I do too, but just now and again a film emerges from the dark blue depths of Fitzgerald style cinema, with those magical ingredients -- a story and good actors.

Such is the Marathon Man..On the surface Schlesingers thriller is just about a Nazi War criminal who comes out of the Amazon Jungle to collect his loot, via a series of double crossings and dealings, with what we're led to believe are couriers and a Tricky Dicky American Security Department, (somewhere between the CIA and FBI.)

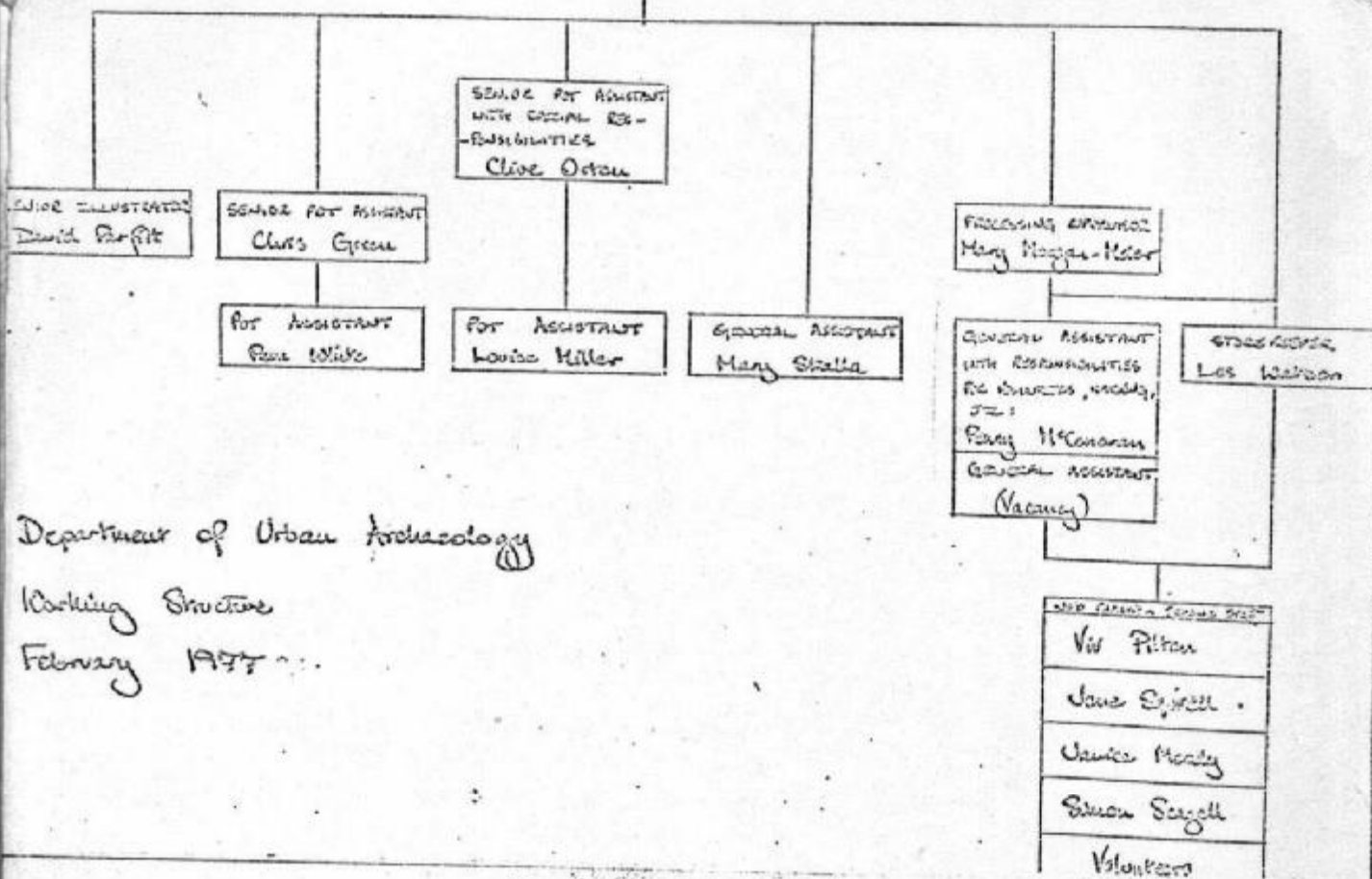
Dustin Hoffman portraying a student, finds himself as a pawn, a suppressed figure, and a liability to every party. It is not without coincidence that Hoffman as the student, with marathon running ambitions, has Jessie Owens as his inspiration. For the benefit of UNDERGROUND's younger readers, (D.Stevens, Mr.Wright, B.Hobley, etc.) Owens was a famous negro runner who won a gold in 1936 Berlin Olympics, and in effect showed the depressed black, winning against the American system and Nazi. Likewise Hoffmans student figure comes from a background of suppression, with his father committing suicide under the victimisation of Marcarthyism, and he finds himself in a similar predicament, having to find his place in a William Golding story littered with untied endings.

Hoffman, Olivier and Devine, play their parts with great style and vigour, particularly Olivier, who is involved in the films most tense moments, notably the gripping 'dentistry interrogation', and the dramatic walk through the Jewish part of New York, where in the process a woman is knocked over by a taxi and a man has his throat cut.

The combination of Oliviers evil and Hoffmans honesty generate tension and excitement, in a tale laced with suspense and intrigue, so much so, that it's odds on, " yer fumble yer woodbines and spill yer beer!"

# MELVYN

FINDS OFFICE  
Mike Floods



Department of Urban Archaeology

Working Structure

February 1977

# OMEGA

In the "GREYFRIARS" article last month it was suggested, "No stratified Saxons were found overlying the Roman deposits as the area appears to have been left open and undeveloped from the C2nd. to the C12th." (2. Pre-C14th.)

Mr. Webster would like us to point out that in his area, Medieval cess pits cut the whole of the area and could have destroyed any later Roman levels. However, Tony in his LAMAS report (Vol. 25. pp. 226-7) writes: "There appeared to be no transition between the Medieval and the top of the Roman levels, and certainly no structures, but the restrictions of such a small area means that this can only serve as a guide to future work in the vicinity". The area excavated was 2.5x2m., the date of the Roman was not ascertained.

Crispin would like us to retract the comment in issue 2, "... and Crispin Jones late of the GPO and occasionally on time to assist Trevor....". Please consider it done. The problem is, he didn't say whether he was upset because he was ALWAYS late or NEVER

## ANNOUNCEMENTS.

First the good news:

To celebrate Jubilee year George and Liz have decided to get married. Liz works for the M.of.L. in the conservation dept.

Bad news...

We have to, unfortunately, announce two resignations: Miss Caroline who's going back to law and Mr. Charles, who's going back to Wales. Goodbye.

-0-

Proverb: People who tune pianos on Tuesdays shouldn't throw stones!

Manchester have at last got their own Unit.

Humphry Woods, at present digging Eltham Palace made a snap decision and got married!

How would you like to spend a few hours a month helping with 'UNDERGROUND', a typist would be very welcome (my two fingers are worn down), of course if you cannot type there are many more jobs to do, and it is interesting work/hobby. This newsletter has lots of potential.